



Hands on Workshop: Fresh Flower Arranging

With Anthony Baradhi from the
Flower Station





I. Flower Origins

II. Roses

- a. **Color Significance**
- b. **Varieties & Meanings**

III. Flower Arranging

- a. **Containers**
- b. **Greenery**
- c. **Care**

Origins:

◆ Primary Floral Export Countries:

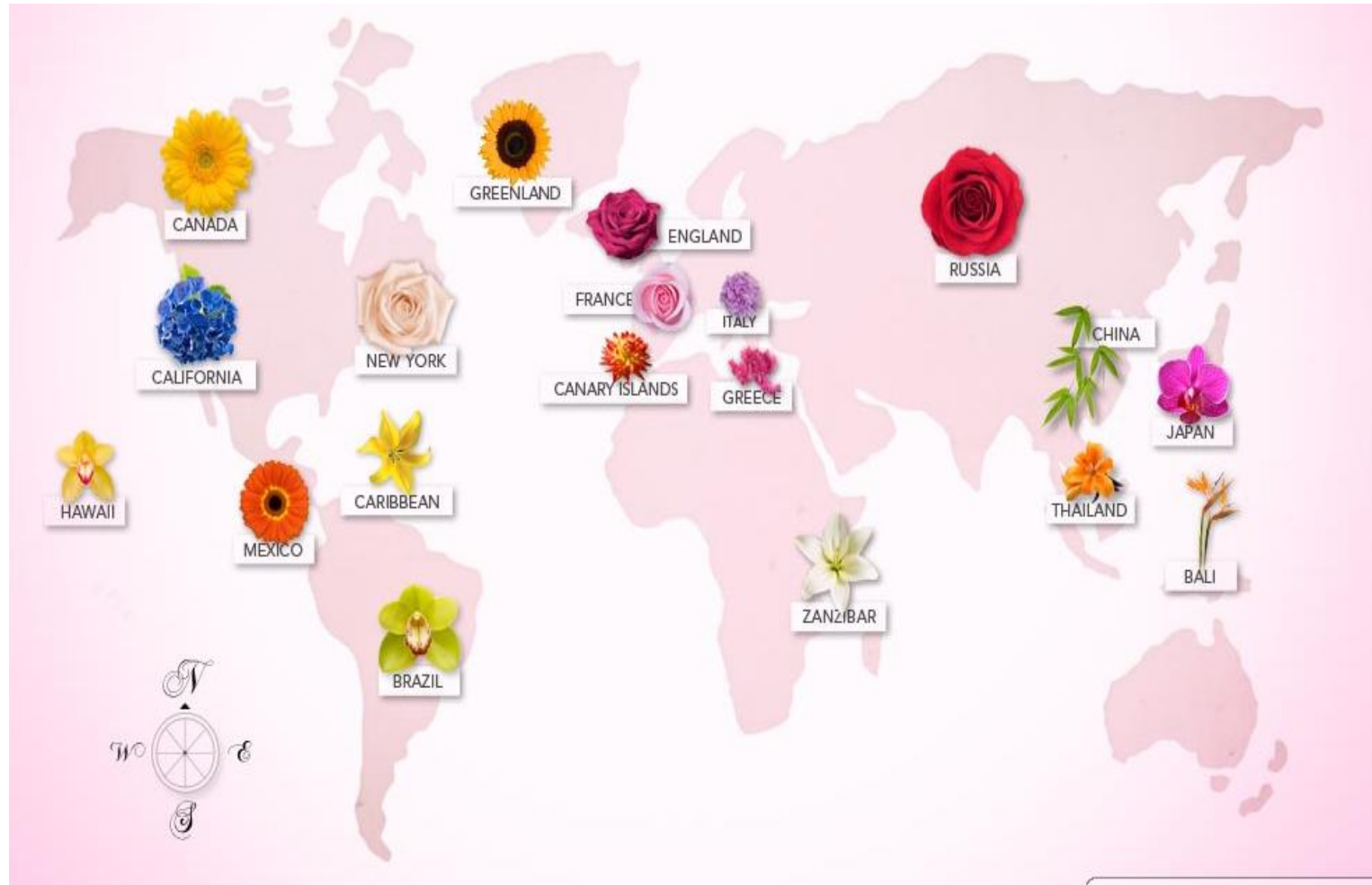
- The Netherlands- Tulips, Roses, Cymbidium Orchids
- Columbia & Ecuador- Roses, Carnations, Chrysanthemums
- Russia - Roses, Daisies, Lilies, Mums
- Italy- Ranunculus, Anemone, Sweet peas
- Japan- Gloriosa Lilies, Scabiosa, Sweet peas, Orchids

◆ Within the U.S.:

- California- Delphinium, Gerbera Daisies, Hydrangea
- Florida-Larkspur, Snapdragons, Stock Flowers
- Hawaii-Tropical Leaves, Orchids



WORLD MAP OF FLOWERS





Roses' Color Significance:

- Red- Love & Romance
- Dark Pink- Grace & Appreciation
- Light Pink- Innocence & Sweetness
- Orange- Desire & Enthusiasm
- Yellow- Friendship & Joy
- White- Purity & Sympathy
- Lavender- Enchantment & Love At First Sight

Varieties & Meanings:

Medium Stem Roses vs.
Long Stem Roses



Freedom
(Love)



Cherry Brandy
(Fascination-desire)



High & Magic
(Sincerity-
appreciation)



Skyline (Joy-New
Beginnings)



Sophie
(Admiration)



Malibu (Grace)



Vendela
(Purity-Sincerity)



Cool Water
(Enchantment)



Arranging: Containers

I. Shapes- Compact/Contemporary vs. Tall & Airy/Traditional Style

II. Glass vs. Ceramic

III. Design using Oasis (Foam)



Arranging: Greenery

III. Vase Lining - Curly Willow, tropical leaf, synthetic roll

IV. Greenery & Accents; Lemon Leaf, Variegated Pittosporom, Wax Flowers, Solid Asters, Baby's Breath, Seeded Eucalyptus, Seasonal: Queen Anne's Lace, Limonium, Statice, Bupleurum





Arranging: The Basics

- V. Keep the vase water as free greenery or floating petals as possible. This ensures the flow of water to the flower head. *Use a floral preservative*
- VI. Botrytus: Is a fungal Disease. Maintain a humidity level below 94°. Keep the fresh blooms dry and cool.
- VII. Bent Neck-Failure to Open: Lack of water flowing to the bloom.
- Exposure to ethylene gas
- Flowers may have been harvested too early



Care:

- 🌹 Room Temperature (Drafty Cold Rooms Stunt Longevity)
- 🌹 Extreme Room Temperatures Impact Fresh Cut Flowers (Ideal: 68 degrees F)
- 🌹 Nutrients i.e. Floralife (Sugar-based Nutritional Source; Hydration; Keeps stems from clogging; Bacteria Eliminating)
- 🌹 Change Water After Three Days or As Needed



Flower Station

● 9 Veronica Avenue

Somerset, NJ 08873

(732)249-6500; (800)944-5756

● 203 Nassau Street

Princeton, NJ 08540

(609)430-0700

<http://www.flowerstation.com/>

Like Us on Facebook!- 'Flower Station'

Helpful Links:

<http://www.youtube.com/watch?v=cqIW3-eZWm4>

http://www.youtube.com/watch?v=wZ_dGCFrang